

Getting KSEG to work on Lion/Mountain Lion via the windows version and wine bottler is simple. Here's what you need to do first:

1. **Mountain Lion users only** - please download and install X11 first: [Click here](#)
2. Download the Windows version of kseg: [Click here](#)
3. Download Winebottler **1.2.3**: [Click here](#)

**Note:** I suggest you download or move these items to your desktop, especially “WineBottlerCombo\_1.2.3.dmg” and “kseg-0.401.zip.” Mountain Lion users, please have X11 installed before proceeding onto the next set of instructions, the file name should be “XQuartz-2.7.3.dmg.”

Follow the remaining steps and everything should work fine.

1. Double click “WineBottlerCombo\_1.2.3.dmg” so that you get a window like this:

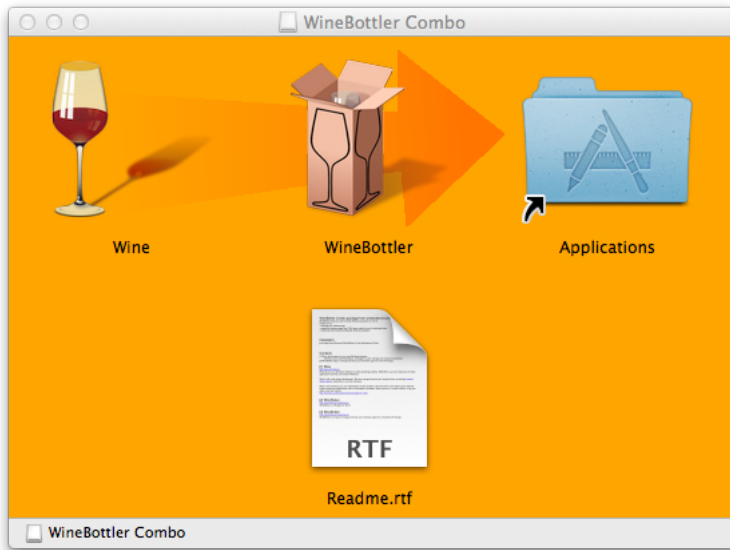


Figure 1: Wine Bottler

2. Inside this window, drag both “Wine” and “WineBottler” into the blue folder “Applications,” on the right. Wait a couple seconds and they should be installed. After installation is complete, you can eject “WineBottler Combo” as you would do any DMG file.
3. Alright, you're almost done. What you need to do now is look at the other file you downloaded “kseg-0.401.zip”. Unzip it by double clicking it, and then another folder should appear on your desktop called “kseg-0.401”. Go inside of it.
4. Inside this folder, you should look for the file called “KSEG.exe”. Double click it, and you should see this pop up, look below:

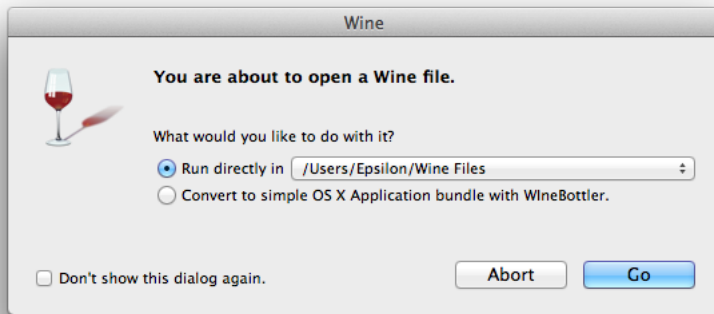


Figure 2: Wine Pop Up

5. Make sure everything in that pop up window is ticked exactly as you see in the figure above, then press “Go”.
6. What you should see is a fully functional KSEG appear before you. So, whenever you need to run kseg again, click on that KSEG.exe file till you see the wine popup, then press Go.

Now, to save your work from kseg inside the Mac, you need to click the following items within the kseg program, click file, then save as, and the following window should pop up:

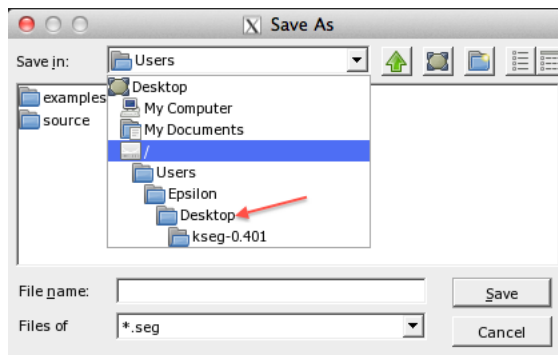


Figure 3: Save as

What you’ll want to do is save within your User directory inside your mac, that is, /Users/yourusername/Desktop. In the screenshot above, I selected the “/”, highlighted in blue, where inside, lies Users, then my home folder Epsilon, and then finally Desktop, where the kseg file is to be stored. I suggest you follow this scheme to easily find your kseg files. Good luck.